

CAN 32	Global Scanning UK Ltd.	Page 1 of 5
Rev.1	About SmartWorks Pro Presets	Date: 2020-07-29
This document intended to supplement the installation and operation manual or training and instruction sessions provided by Global Scanning and its Colortrac partners		

About SmartWorks Pro Presets

SmartWorks Pro v1.3.0.0 alpha 1 and onward features built-in presets suitable for a range of popular scanning tasks plus the creation of new custom presets by the customer.

A Colortrac SmartLF scanner must be attached to create presets. The presets created will be associated with the connected scanner. Changing the scanner will make available only the relevant presets for that scanner model.

The built in presets are as follows:

STANDARD	-	Desk top publishing and general-purpose documents
COLOR PHOTO	-	Photographic images
COLOR MAP	-	Maps including colors
COLOR CAD	-	Line drawings with color
BLUEPRINT	-	Blueprint and heavy print
BW CAD ORIGINAL	-	Master line drawing documents
BW CAD COPY	-	Copies of line drawings
BW CAD SHADED 1	-	Line drawings with light shaded areas
BW CAD SHADED 2	-	Line drawings with dark shaded areas
GREY CAD SHADED	-	Greyscale line drawings
WHITENED PHOTO	-	Adding vibrance to photographic images

Parameter that can be set in a preset:

Width	Mirror	Auto Naming
Length	Sharpening	Auto overwrite
Autosize	B/W point	File type
Auto BW point	Brightness	Folder
Resolution	RGB sliders	File Name
Quality	RGB graphs	
Justification	Sharpening fast	
Colour Profile	Invert	
Gamma	Blur	
Brightness		
Start media on detection		
sRGB intent		

CAN 32	Global Scanning UK Ltd.	Page 2 of 5
Rev.1	About SmartWorks Pro Presets	Date: 2020-07-29
<small>This document intended to supplement the installation and operation manual or training and instruction sessions provided by Global Scanning and its Colortrac partners</small>		

Parameters that cannot be included in a preset:

File Name	Compression quality
File number	Crop
Rotate	Deskew
Resample	Extended Borders
Annotation	Convert 256
Convert GS	Screen color correction

How to create new presets:

<create/edit preset>

Creating a preset will always offer the current document size option and colour depth set in the settings panel. First select the colour depth intended for the preset in the settings panel. To create an autosize preset, select autosize on the selection panel or for a fixed document size preset, select either manual and set the size or choose from the list of standard paper sizes.

There are two methods of creating presets

Method 1 - Blank start.

This method will create a blank preset for individually selecting the required parameters.

- Press 'reset' button
- Select required color depth on the settings panel
- Set autosize or fixed size as required on the settings panel
- Select 'create/edit preset' from the preset drop down list. A dialog box will appear.
- Using the drop-down menu to display the lists of available parameters, select the required parameters and set their values.
- Type the new preset name and select save.

The new preset will appear in the preset drop down list.

Method 2 - Edit preset.

This method will obtain the values of the selected preset and place them into the preset dialog for editing.

- Load a preset
- Select 'create/edit preset' from the preset drop down list. A dialog box will appear with the preset values loaded.
- Parameters can be added or removed and their values edited.

CAN 32	Global Scanning UK Ltd.	Page 3 of 5
Rev.1	About SmartWorks Pro Presets	Date: 2020-07-29
<small>This document intended to supplement the installation and operation manual or training and instruction sessions provided by Global Scanning and its Colortrac partners</small>		

- Type the new preset name and select save.

The new preset will appear in the preset drop down list.

Adding filters to a preset

There are two methods of adding filters to a preset

Method 1 - Edit preset.

This method will create a new preset.

- Load a preset
- Select 'create/edit preset' from the preset drop down list. A dialog box will appear with the preset values loaded.
- Select filters from the drop-down list and add from the list.
- Adjust filter values.
- Type the new preset name and select save.

The new preset will appear in the preset drop down list.

Method 2 - Add filter to preset

This method will add the values from an applied filter to the preset being used.

- Load a preset
- Scan a document
- Display the filter options in the right-hand panel by selecting 'current image'
- Select a filter and adjust the parameters as desired
- Select 'add filter to preset.'

The preset will be updated to include the new filter parameters.

Working with a loaded preset

When a preset is loaded the parameter option displayed in the selection panels are restricted to the preset fundamental values. For example, a different colour depth cannot be selected.

The values that are set in the preset are indicated in **bold** text in the selection panels. Not all parameter combinations are possible so by changing a value of a loaded preset in the selection panels, changes to other parameters may occur, indicated by returning to standard text.

CAN 32	Global Scanning UK Ltd.	Page 4 of 5
Rev.1	About SmartWorks Pro Presets	Date: 2020-07-29
This document intended to supplement the installation and operation manual or training and instruction sessions provided by Global Scanning and its Colortrac partners		

Note - not all parameters have to be used for a preset leaving the unused parameters available for adjustment as required from the settings panel. Always check the parameters in standard text.

The preset can be released to regain all possible parameter options by selecting the 'Reset' button. This will allow SmartWorks Pro to be used without presets where the user makes all parameter selections on the selection panels.

Deleting a preset

<Delete preset>

If a preset is no longer required the presets can be deleted by name. The built in presets in capital type cannot be deleted.

- Load the preset to be deleted in the settings panel
- Select <Delete preset> from the drop-down menu

The loaded preset will be deleted.

Importing and exporting presets

<Export user preset>

<Import user preset>

Exporting Presets

This will allow all presets to be saved to a file containing all parameters for all presets.

- Select <Export user preset>
- In the 'save as' dialog set the folder and file name to be saved and click 'save'

The presets will be exported to the destination set.

Importing Presets

This will import presets saved in a .swpEx file into SmartWorks Pro

- Select <Import user presets>
- Browse to the required .swpEx file and select file - ok

The presets will be imported.

CAN 32	Global Scanning UK Ltd.	Page 5 of 5
Rev.1	About SmartWorks Pro Presets	Date: 2020-07-29
This document intended to supplement the installation and operation manual or training and instruction sessions provided by Global Scanning and its Colortrac partners		

Note - if presets with the same name already exist you will be prompted to overwrite the existing preset or cancel. If cancel is chosen the preset will be imported with a number added at the end of its name.

SmartWorks Pro preset storage location





User presets are stored by the program as .pst files in the user's AppData area under the scanner type where the path is:

C:\Users\username\AppData\Local\SmartWorks Pro\Presets\scanner_model
and...

username = the logged in user

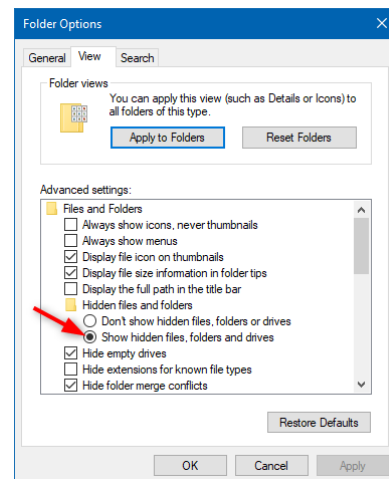
scanner_model = the installed Colortrac scanner e.g. SmartLF SC36 Xpress E

Typical preset files showing .pst extension

 Grey cleanup LZW.pst	18/03/2020 15:18
 Grey cleanup.pst	18/03/2020 15:14
 NEW.pst	16/03/2020 11:59
 none.pst	19/03/2020 15:27

The .pst files (preset files) can be copied between SmartWorks Pro installations if the versions of the SmartWorks Pro preset system are the same. The files remain in the personal settings of the pc even if SmartWorks Pro is uninstalled. NOTE: Change the Folder and Search options to reveal the user's AppData folder.

```
[PRESET VERSION]
1.x4
[PRESET NAME]
Grey cleanup LZW
[NUMBER OF SETTINGS]
```



END