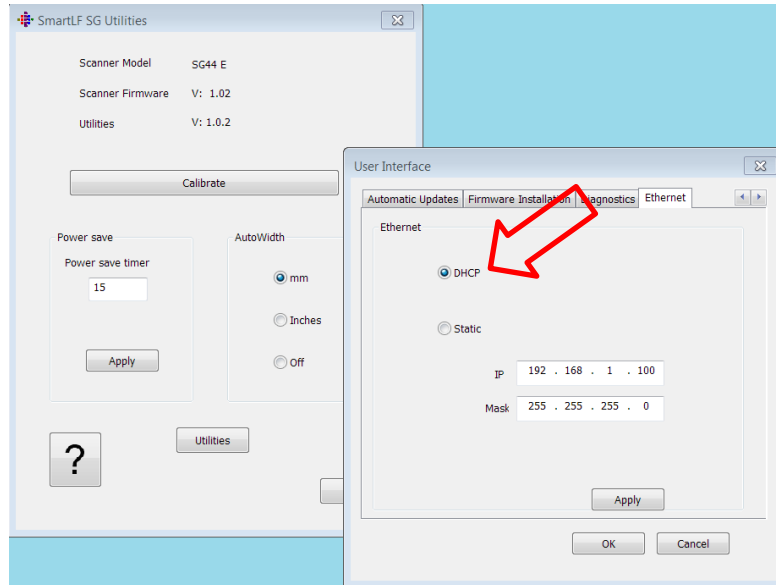


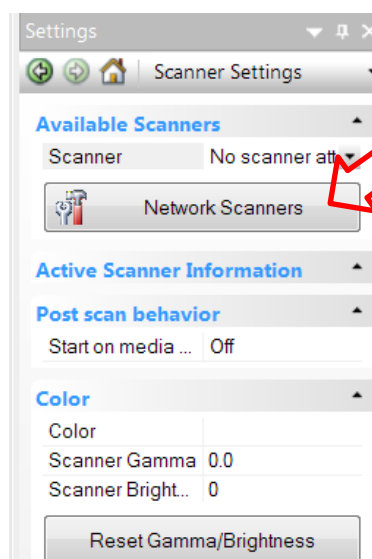
USING ETHERNET WITH THE COLORTRAC SG SCANNER

REQUIRED: SmartWorks Pro Evaluation/Demo, SG Utilities, SG USB Driver (all from scanner CD or via website).

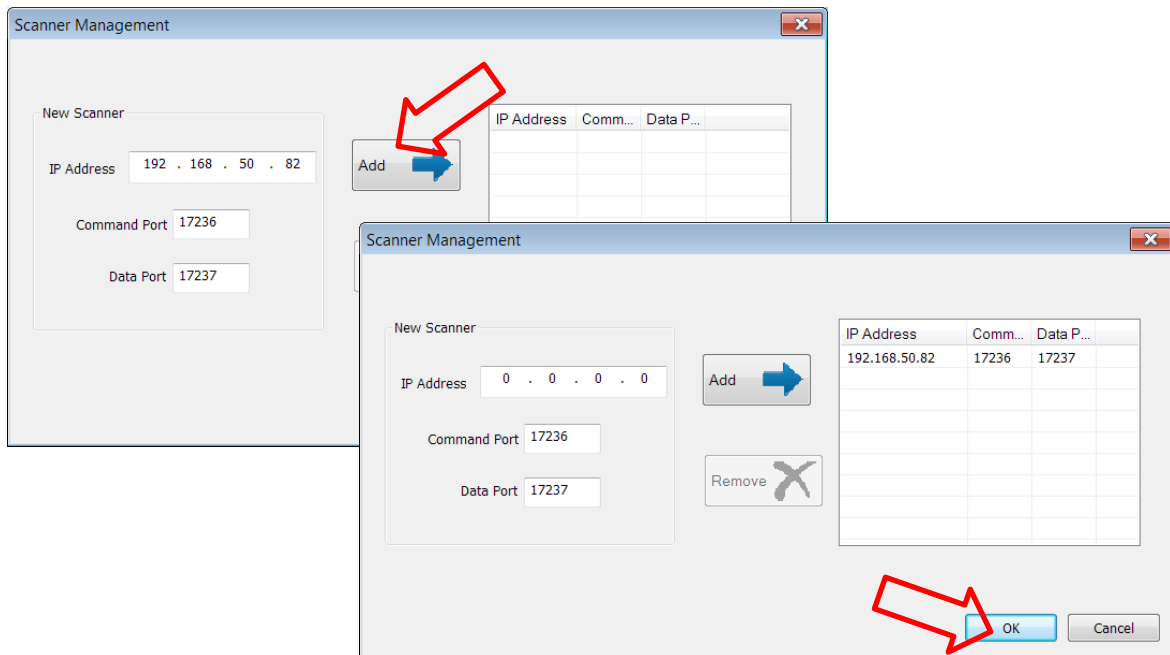
Using USB connection and SG Utilities go to Ethernet tab and select DHCP. Click OK then Exit program.



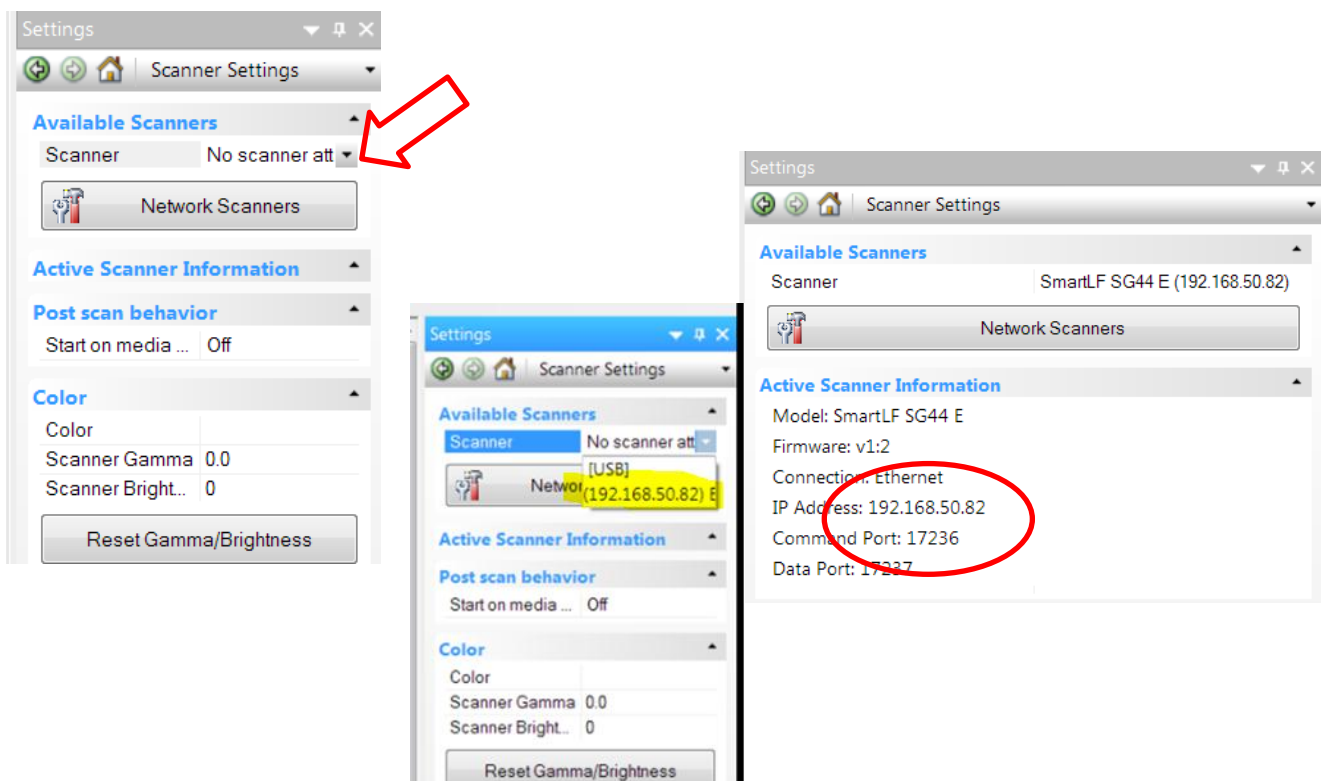
Now remove USB, connect Ethernet and restart SG Utilities. SG Utilities should now connect over Ethernet. Exit SG Utilities
Start SmartWorks Pro. Go to Scanner Settings then Network Scanners.



Click Add to add the detected address (from DHCP). Remove any unused previous address if they exist. Click OK



In Scanner Settings click scanner connection button. Click IP string to select new Ethernet address



SmartWorks Pro will now scan across the network.