

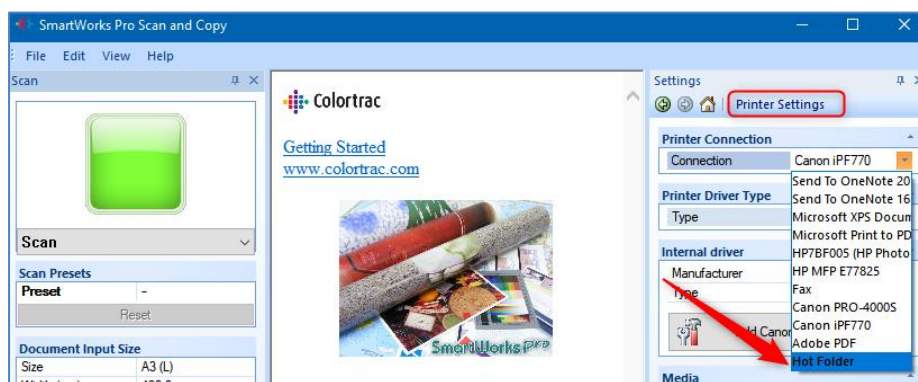
CAN 27	Colortrac Scanners - Global Scanning UK Ltd.	Page 1 of 1
Rev1.0	CAN27- HOT FOLDER Printing Profiled Scans	Date: 2018-10-11
This document intended to supplement the installation and operation manual or training and instruction sessions provided by Global Scanning UK Ltd. and its partners		

Introduction

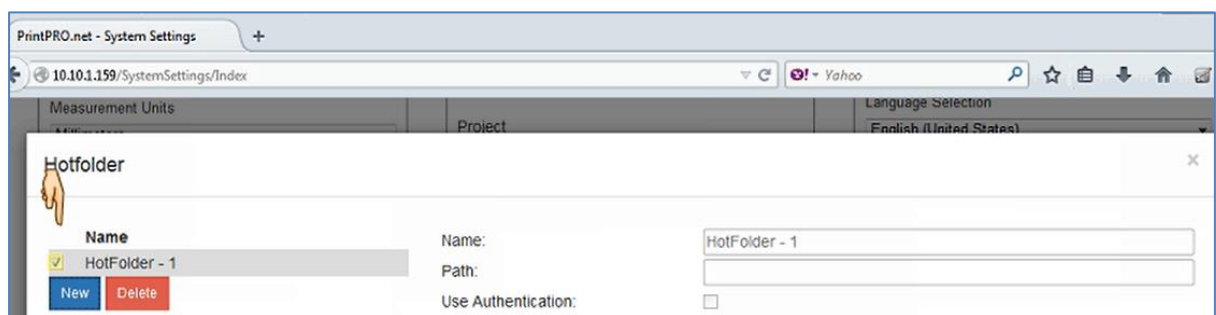
For printers equipped with a raster image processor (RIPs) print option, sending output to hot folders can be an efficient alternative to conventional print driver printing. In hot folder printing the scan system software sends each scan to a special folder that is constantly monitored by the print system software. This example shows how to set up a Colortrac scanner and KIP printer installation.

Hot Folder Configuration

1. Configure SmartWorks Pro for hot folder operation by following the instructions in this video <https://www.colortrac.com/videos/smartworks-pro-print-hot-folder/>



2. Configure the KIP printer using PrintPRO.net from your browser as shown by following the instructions in the second half of this video. Note that you must configure the folder location to be the same as used in step 1. Section one shows how to make a suitable print template to assign to the print. <https://www.kip.com/videos/Tutorials/LPR%20and%20Hot%20Folder%20Printing/Hotfolder%20Installation%20and%20Usage%20R1%20-%20800x600.mp4>



ICC Color Management or Color Profiling

Colour profiled scan files are made using the Colortrac SmartWorks Pro Profiler module included free inside the scanning software. SmartWorks Pro Profiler produces stand-alone pre-corrected sRGB or Adobe RGB and RGB Profiled images with embedded color space correction. Colour corrected scan files (embedded ICC profile) must be printed or viewed on profiled printers or monitors that are able to respond to the embedded profile colour space. In order for scan files to print with colour accuracy, it is important to calibrate the KIP printer beforehand for the media and toners used to print the scan. Follow the instructions in document at the following location for more details or consult your KIP subject matter expert.

<http://kipnews.kip.com/Public/SoftwareManualSystemK/SysKKIPColorAdvancedPro.pdf>

END