

CAN 20	Colortrac Ltd	Page 1 of 1
Rev1.0	<b>SmartWorks Pro Scan Data Logger</b>	Date: 2013-03-25
This document intended to supplement the installation and operation manual or training and instruction sessions provided by Colortrac and its partners		

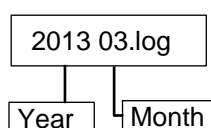
# SmartWorks Pro Scan Data Logger

## Scan Data Logger

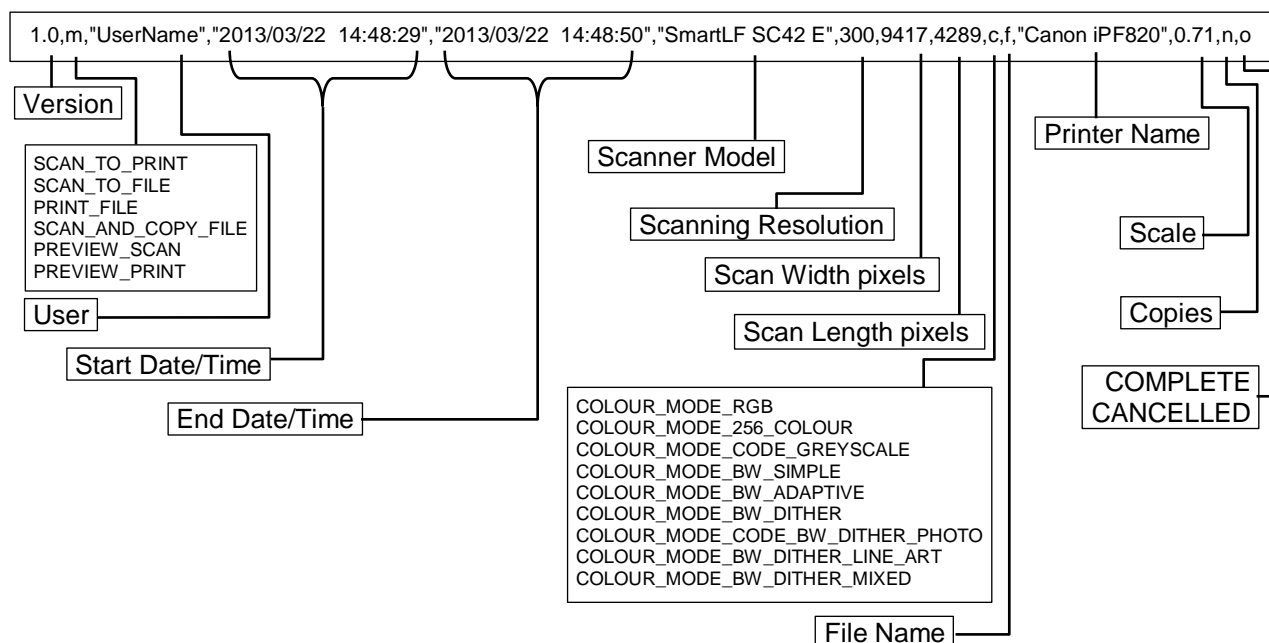
The scan logger feature function saves up to 29 different pieces of information about the scanning process. It was introduced into SmartWorks Pro in v1.3.2.0 (January 2013).

## How to access the Scan Data Log

Data from each scan or copy is added as a separate line entry to a single file for each calendar month. Files are written automatically to [DRIVE]:\ProgramData\Colortrac\SmartWorks Pro with the .log extension and follow the naming format below. The files are not encrypted or hidden.



Each of the fields of scan data is separated by a ',' with scan mode (m), colour mode (c) and outcome (o) internally coded for compactness. The diagram below shows the field descriptions and order in which they are stored in the file. Boxes with multiple entries are the coded fields.



## Extracting the data

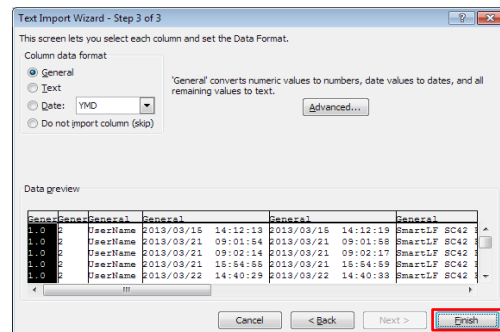
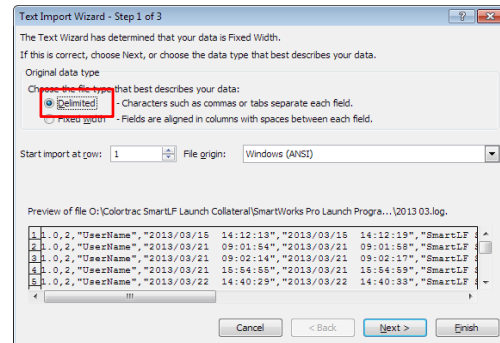
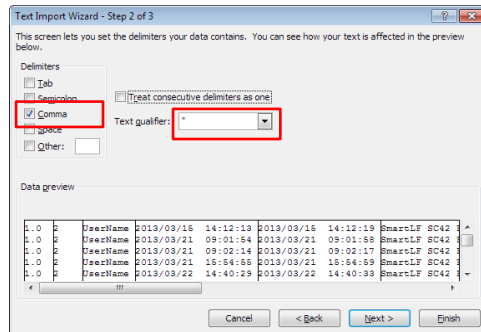
Because the data has been coded you should use the supplied spreadsheet to convert it unless you wish to convert it yourself. To use the converter spreadsheet do the following:

Start Excel. Click Open to open the **year month.log** file and begin using the Text Import Wizard.

**Step 1 of 3 - Select Delimited.** (This is to allow the , and " marks to be used as column separators) then press Next.

**Step 2 of 3 - Check Comma and " as the Text qualifier.** Press Next.

**Step 3 of 3 - Click Finish.**



The **year month.xlsx** data should now look something like this.

	A	B	C	D	E	F	G	H	I	J	K	L	M	N	O
1	1	2	UserName	#####	#####	SmartLF S	400	13418	4794	1	C:\Users\UserName\Documents\SmartW				1
2	1	2	UserName	#####	#####	SmartLF S	200	5401	1710	1	C:\Users\UserName\Documents\SmartW				1
3	1	2	UserName	#####	#####	SmartLF S	200	5533	1712	1	C:\Users\UserName\Documents\SmartW				1
4	1	2	UserName	#####	#####	SmartLF S	200	5445	2400	1	C:\Users\UserName\Documents\SmartW				1
5	1	2	UserName	#####	#####	SmartLF S	254	7931	3636	5	C:\Users\UserName\Documents\SmartW				1
6	1	1	UserName	#####	#####	SmartLF S	300	9417	4289	1	Canon IPF	0.71		1	1

### Using the 'Job Log.xlsx' decoding spreadsheet

With the imported scan data still open, click File, Open and open the 'Job Log.xlsx' spreadsheet which is included as part of the CAN20.zip download. This spreadsheet consists of 3 tabs, Sheet1 (input data), Sheet2 (output data) and Sheet3 (hidden). Sheet2 and Sheet3 convert the contents of Sheet1. The results are stored in Sheet2.

Copy all of the data from the first spreadsheet (using CNTRL+A, CNTRL+C) and paste it into Sheet1 of the Job Log.xlsx starting at cell A1. The converted scan data will be available in Sheet2. Job Log.xlsx is able to take 2000 lines of scan data but this can be extended using normal spreadsheet techniques.

	A	B	C	D	E	F	G	H	I	J	K	L	M	N
1	Function	User Name	Start Date/Time	End Date/Time	Scanner Model	ScanFile Resolution	Scan Width (Inch)	Scan Length (Inch)	Colour Mode	File Name	Printer Name	Scale %	Copies	Success
2	SCAN_TO_FILE	UserName	2013/03/15 14:12:13	2013/03/15 14:12:19	SmartLF SC42 E	400	33.545	11.985	COLOUR_MODE_RGB	C:\Users\UserName\Documents\SmartWorks\ProLaser\CADfile0001.tif				COMPLETE
3	SCAN_TO_FILE	UserName	2013/03/21 09:01:54	2013/03/21 09:01:58	SmartLF SC42 E	200	27.095	8.550	COLOUR_MODE_RGB	C:\Users\UserName\Documents\SmartWorks\ProLaser\CADfile0002.tif				COMPLETE
4	SCAN_TO_FILE	UserName	2013/03/21 09:02:14	2013/03/21 09:02:17	SmartLF SC42 E	200	27.095	8.560	COLOUR_MODE_RGB	C:\Users\UserName\Documents\SmartWorks\ProLaser\CADfile0003.tif				COMPLETE
5	SCAN_TO_FILE	UserName	2013/03/21 15:54:55	2013/03/21 15:54:59	SmartLF SC42 E	200	27.095	12.000	COLOUR_MODE_RGB	C:\Users\UserName\Documents\SmartWorks\ProLaser\CADfile0004.pdf				COMPLETE
6	SCAN_TO_FILE	UserName	2013/03/22 14:40:29	2013/03/22 14:40:33	SmartLF SC42 E	254	31.224	14.315	COLOUR_MODE_BW_ADAPTIVE	C:\Users\UserName\Documents\SmartWorks\ProLaser\CADfile0005.tif				COMPLETE
7	SCAN_TO_PRINT	UserName	2013/03/22 14:48:29	2013/03/22 14:48:50	SmartLF SC42 E	300	31.390	14.297	COLOUR_MODE_RGB		Canon IPF520	71		1 COMPLETE

The data in Sheet2 is now converted and can be exported or processed further as required.

END