

ANAtch Eagle Mono Scanners

Large Format Digital Monochrome Scanners with Exceptional Accuracy & Resolution for GIS, Mapping, CAD and Graphic Arts Applications

ANAtch scanning technology is designed for highly demanding GIS and Cartographic applications. The Eagle Monochrome Series offers superior geometric accuracy, resolution and image quality.

The ANAtch Eagle 4225 & 2725 - leading edge monochrome scan technology and innovation:

Resolution - Highest on the market with a true resolution of 1270 dpi and with capabilities of scanning up to 2540 dpi, the Eagle soars to meet the needs of the most demanding applications. Benefits include the capability of **resolving up to 18 line pairs per millimeter**, providing the ability to separate even the tightest contours. For Reprographics applications, the absence of moiré patterns is assured with the Eagle's ability to scan halftone line screened film dot for dot - simply and easily.

Geometric Accuracy - The tightest tolerance found on a Sheet Feed scanner today and boasting registration accuracy of **+/-0.05%** plus a digitising rounding error of **+/- 1 pixel**, the Eagles are true GIS/Mapping scanners. The accurate scans produced allow images to be brought straight into a Geo referencing package without having to go through a post-scan editing exercise such as rubber sheeting or warping. This saves both time and money. The patented large diameter single roller design reduces the accordion affect commonly seen on smaller diameter multiple roller-designed scanners.

Productivity - No more sacrificing speed in search of quality thanks to the Eagle's fast scanning speeds, up to **1.39 in/s** at 400 dpi for the Eagle 2725. These scanners will not only produce the most accurate scans at the highest resolution - but also at truly productive 'right first time' quality. The Eagle's speed effectively eliminates the bottleneck at the scanning phase of the workflow experience with some previous generation scanners, allowing the user to focus on the data's final application.

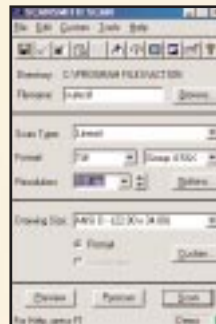


Included Software

ScanSmith Productivity Suite 2003

ScanSmith Scan

Professional scanner user interface with real time scanning display window for area of interest selection and prescan. Comprehensive controls including four types of thresholding, multiple paper load options and the ability to control the scanning process from the scanner itself.



Supported File Formats

TIFF
JPG
BMP
CAL
PCX
RLC
RLE
CIT
TG4
HRF
IGS
COT
GRY
RST

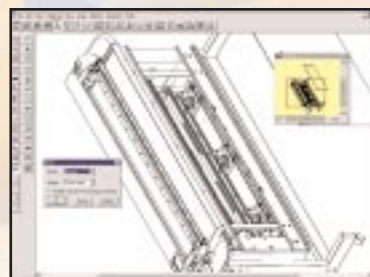
Easy Scan

Make your own presets within SCAN and use them in this very simple user interface. Simply enter the file name, set darkness level and scan.



Preditor

A professional raster editor specifically designed for high speed viewing and editing of large colour, greyscale and monochrome images. Optimised for easy to use raster editing, image clean up and drawing functions including extensive thresholding, deskew, despeckle, hole filling and many more.





OUR BUSINESS
IS YOUR IMAGE

ANatech Eagle Mono Scanners - Technical Specifications

| Maximum scanning rates* | 4225 | 2725 |
|-------------------------|--|--|
| | 1270 dpi 0.28 in/sec (7.11 mm/s) 1000 dpi 0.35 in/sec (8.89 mm/s) 800 dpi 0.44 in/sec (11.18 mm/s) 600 dpi 0.59 in/sec (14.99 mm/s) 400 dpi 0.88 in/sec (22.35 mm/s) 200 dpi 1.76 in/sec (44.70 mm/s) | 1270 dpi 0.43 in/sec (10.92 mm/s) 1000 dpi 0.55 in/sec (13.97 mm/s) 800 dpi 0.69 in/sec (17.53 mm/s) 600 dpi 0.92 in/sec (23.37 mm/s) 400 dpi 1.39 in/sec (35.31 mm/s) 200 dpi 2.77 in/sec (70.38 mm/s) |
| Imaging technology | 11 monochromatic CCD cameras each CCD 5000 pixels | 7 monochromatic CCD cameras each CCD 5000 pixels |
| Active scan area | 42" (107cm) x unlimited length | 27" (68.6cm) x unlimited length |
| Maximum document width | 44" | |
| Accuracy | +/-0.05% plus a digitising rounding error of +/- 1 pixel | |
| Paper skew | +/- 0.1% | |
| Resolution | 2540 dpi maximum, 1270 dpi true optical resolution Variable from 50 to 2540 dpi in 1 dpi increments | |
| Image resolve | 18 line pairs per mm @ 30% | |
| Media transport system | Patented single roller pinch feed, maximum media thickness 0.1" (2.54 mm) Automatic document load, position and size, manual document feed | |
| Document type | Opaque or transparent | |
| Data capture | 8-bits per pixel | |
| Output data types | 256 level greyscale, Black & White | |
| Output file formats | Multiple Industry Standard Raster File Formats - for Greyscale and Black & White data | |
| Illumination | Dual cold cathode tube | |
| Scanner interface | Fast SCSI 2, 50 way micro D type connector | |
| Dimensions (W x D x H) | 58 x 26 x 40 in (147.3 x 66.0 x 101.6 cm) | |
| Weight | 500 lbs, 230 Kg | |
| Operating environment | 15 - 30°C, 59 - 86°F, 15 - 85% RH, non-condensing | |
| AC power requirement | International auto switching 90 VAC - 264 VAC 50/60 Hz 150 Watts | |

Eagle 4225/2725 Scanners Include

ScanSmith Productivity Suite, Preditor, User documentation., Micro SCSI card, cable and terminator.

Minimum System Requirements

Pentium 400Mhz Processor,
256MB RAM
13GB Free disk space
Windows 95/98/2000 or NT4.0

*The scan rate is proportional across the full range of resolutions supported by the scanner. However, the actual scan times will depend on the host system performance. Contact your local supplier for advice on the optimum system requirements for your application.



info@action-imaging.com www.action-imaging.com

UK Office • Kings Hall • St Ives Business Park • St Ives • Huntingdon • Cambridgeshire • PE27 4WY
T +44 (0)1480 464618 • F +44 (0)1480 464620

US Office • 10499 Bradford Road • Littleton • Colorado • 80127 • USA
T +1 (303) 973 6722 • F +1 (303) 973 7092

ACTION Imaging Solutions/Colortrac reserve the right to change or amend the specifications without notice. Colortrac is a trademark of Colortrac Ltd. All other trademarks are owned by their respective companies. Copyright © 2001 Colortrac Ltd. Images in the banner montage reproduced by kind permission of Simon Harris, Matthew Weaver, Niki Smart, Coventry School of Art and design.



INDIVIDUAL
INDUSTRY
SOLUTIONS

